

TITLE

FLIGHT CONTROLS - RUDDER TRIM AND FEEL MODIFICATION

EFFECTIVITY**MODEL**

700 Citation Longitude

SERIAL NUMBERS

-0008 thru -0012 and -0014

The equivalent of this service document has been incorporated on production airplanes -0013, -0015 and On.

REASON

There is potential interference between the co-pilot left rudder pedal and the rudder trim and feel crank arm assembly when there is some left trim input, rudder pedals adjusted full forward, full left rudder and then a left brake application.

DESCRIPTION

This service document provides parts and instructions to replace the rudder trim and feel crank arm assembly.

COMPLIANCE

MANDATORY. This service document must be accomplished within 800 flight hours or 18 months from the date of receipt, whichever occurs first.

A service document published by Textron Aviation may be recorded as *completed* in an aircraft log only when the following requirements are satisfied:

- 1) The mechanic must complete all of the instructions in the service document, including the intent therein.
- 2) The mechanic must correctly use and install all applicable parts supplied with the service document kit. Only with written authorization from Textron Aviation can substitute parts or rebuilt parts be used to replace new parts.
- 3) The mechanic or airplane owner must use the technical data in the service document only as approved and published.
- 4) The mechanic or airplane owner must apply the information in the service document only to aircraft serial numbers identified in the *Effectivity* section of the document.
- 5) The mechanic or airplane owner must use maintenance practices that are identified as acceptable standard practices in the aviation industry and governmental regulations.

No individual or corporate organization other than Textron Aviation is authorized to make or apply any changes to a Textron Aviation-issued service document or flight manual supplement without prior written consent from Textron Aviation.

Textron Aviation is not responsible for the quality of maintenance performed to comply with this document, unless the maintenance is accomplished at a Textron Aviation-owned Service Center.

APPROVAL

Textron Aviation received FAA approval for the technical data in this publication that changes the airplane type design.

MANDATORY**SB700-27-01****FLIGHT CREW OPERATIONS**

No Changes

CONSUMABLE MATERIAL

You must use the consumable materials that follow, or their equivalent, to complete this service document.

NAME	NUMBER	MANUFACTURER	USE
Cor-Ban 27L (non-drying paste)(Type X)	U074099	Textron Aviation Parts Distribution 7121 Southwest Boulevard Wichita, KS 67215	To assist in protecting airplanes from corrosion.
Grease Type I	MIL-PRF-23827	Commercially Available	To lubricate parts.

TOOLING

NAME	NUMBER	MANUFACTURER	USE
Rigging Pin	#10 Size	Commercially Available	To set the control surface travel.

WEIGHT AND BALANCE INFORMATION

Negligible

REFERENCES

Cessna Model 700 Maintenance Manual

Citation Standard Practices Manual

PUBLICATIONS AFFECTED

Cessna Model 700 Illustrated Parts Catalog

ACCOMPLISHMENT INSTRUCTIONS

1. Prepare the airplane for maintenance.
 - A. Make sure that the airplane is electrically grounded.
 - B. Make sure that all switches are in the OFF/NORM position.
 - C. Disconnect electrical power from the airplane.
 - (1) Disconnect external electrical power.
 - (2) Disconnect the airplane batteries.
 - D. Attach maintenance warning tags to the batteries and external power receptacle that have **"DO NOT CONNECT ELECTRICAL POWER - MAINTENANCE IN PROGRESS"** written on them.
2. Remove the rudder trim and feel assembly. (Refer to the Model 700 Maintenance Manual, Chapter 27, Rudder Trim and Feel Assembly - Removal/Installation.)
 - A. (Refer to Figure 1, Sheet 1.) Remove the 7461568-18 Rudder Feel and Trim Crank Arm Assembly.
 - (1) Remove and discard the MS24665-132 Cotter Pin that attaches to the MS17826-4 Nut on the 7464568-13 Pushrod Assembly.
 - (2) Remove the NAS6204-11D Bolt, MS17826-4 Nut and NAS1149D0416J Washers that attach the 7464568-13 Pushrod Assembly and keep.
 - (3) Remove and discard the MS24665-132 Cotter Pins (2) that attach to the MS17826-4 Nuts (2) on the 9916206-5 Rudder Trim Actuator.
 - (4) Remove the NAS6204-11D Bolt, MS17826-4 Nut and NAS1149D0416J Washers (2) that attach the 9916206-5 Rudder Trim Actuator and keep.

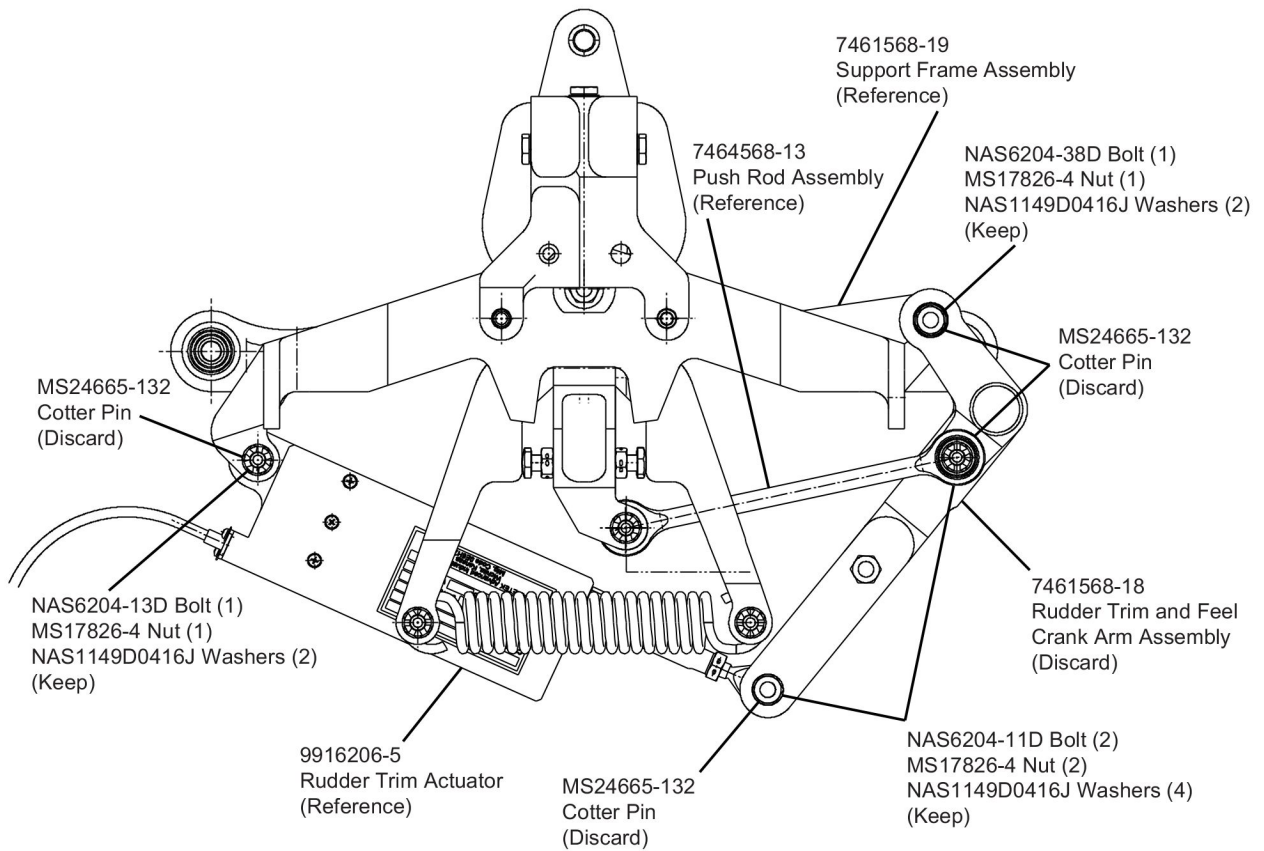
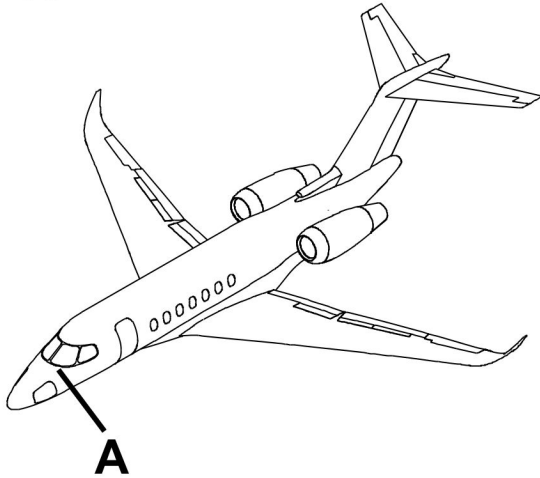
- (5) Remove the NAS6204-13D Bolt, MS17826-4 Nut and NAS1149D0416J Washers (2) that attach the 9916206-5 Rudder Trim Actuator and keep.
- (6) Remove the 9916206-5 Rudder Trim Actuator and keep.
- (7) Remove and discard the MS24665-132 Cotter Pin that attaches to the MS17826-4 Nut on the 7461568-18 Rudder Trim and Feel Crank Arm Assembly.
- (8) Remove the NAS6204-38D Bolt, MS17826-4 Nut and NAS1149D0416J Washers that attach the 7461568-18 Rudder Trim and Feel Crank Arm Assembly to the 74661568-19 Support Frame Assembly and keep.
- (9) Remove the 7461568-18 Rudder Trim and Feel Crank Arm Assembly.
- B. (Refer to Figure 1, Sheet 2.) Install the 7496028-2 Rudder Trim and Feel Crank Arm Assembly.
 - (1) Apply MIL-PRF-23827 Type I Grease to the outer diameter of the NAS74A4-112, NAS74A4-006 and NAS75-4-005 Bushings.
 - (2) Apply U074099 Corrosion Inhibiting Compound to the NAS6204-38D Bolt. Do not apply to the bolt threads.
 - (3) Put the 7496028-2 Rudder Trim and Feel Crank Arm Assembly into position on the 74661568-19 Support Frame Assembly.
 - (4) Install the NAS6204-38D Bolt, NAS1149D0416J Washers and MS17826-4 Nut that attach the 7496028-2 Rudder Trim and Feel Crank Arm Assembly to the 74661568-19 Support Frame Assembly and torque. (Refer to the Citation Standard Practices Manual, Chapter 20, Torque Data Maintenance Practices.)
 - (5) Install the MS24665-132 Cotter Pin on the MS17826-4 Nut. (Refer to the Citation Standard Practices Manual, Chapter 20, Safetying - Maintenance Practices.)
 - (6) Install the NAS6204-11D Bolt, NAS1149D0416J Washers and MS17826-4 Nut that attach the 7464568-13 Pushrod Assembly and torque. (Refer to the Citation Standard Practices Manual, Chapter 20, Torque Data Maintenance Practices.)
 - (7) Install the MS24665-132 Cotter Pin on the MS17826-4 Nut. (Refer to the Citation Standard Practices Manual, Chapter 20, Safetying - Maintenance Practices.)
 - (8) Install the 9916206-5 Rudder Trim Actuator.
 - (9) Install the NAS6204-13D Bolt, NAS6204-11D Bolt, NAS1149D0416J Washers and MS17826-4 Nuts that attach the 9916206-5 Rudder Trim Actuator and torque. (Refer to the Citation Standard Practices Manual, Chapter 20, Torque Data Maintenance Practices.)
 - (10) Install the MS24665-132 Cotter Pins on the MS17826-4 Nuts. (Refer to the Citation Standard Practices Manual, Chapter 20, Safetying - Maintenance Practices.)
3. Install the Rudder Trim and Feel Assembly. (Refer to the Model 700 Maintenance Manual, Chapter 27, Rudder Trim and Feel Assembly - Removal/Installation.)
4. Do the Rudder Trim and Feel Assembly Post-Maintenance Checks. (Refer to the Model 700 Maintenance Manual, Chapter 27, Rudder Trim and Feel Assembly - Removal/Installation.)
5. Put the airplane back to its initial condition.
6. Remove the maintenance warning tags and connect the airplane batteries.

7. Make an entry in the airplane logbook that states compliance and method of compliance with this service document.

NOTE: Textron Aviation recommends that compliance with all service documents is reported to a maintenance tracking system provider.

- Complete a record of compliance. (Maintenance Transaction Report, Log Book Entry, or other record of compliance.)
- Put a copy of the completed record of compliance in the airplane logbook.
- Send a copy of the completed record of compliance to the maintenance tracking system provider used.

A110190



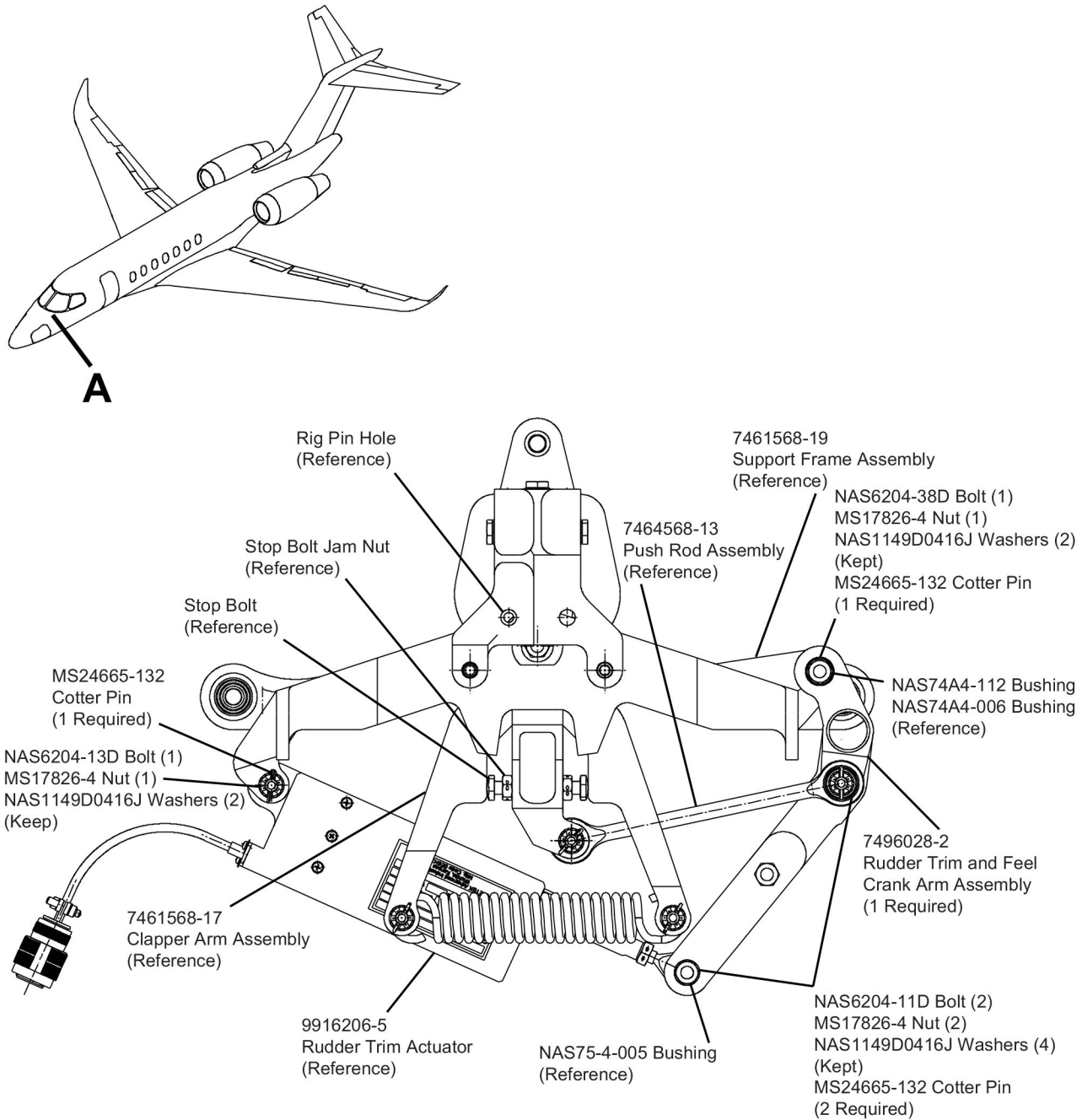
DETAIL A

Before Modification

7461567-2

Figure 1. Rudder Trim and Feel Assembly (Sheet 1)

A110191



DETAIL A
 After Modification

7496028-1

Figure 1. Rudder Trim and Feel Assembly (Sheet 2)

MATERIAL INFORMATION

Order the kit/parts below to install this modification.

NEW P/N	QUAN-TITY	KEY WORD	OLD P/N	INSTRUCTIONS/ DISPOSITION
SB700-27-01	1	Kit , consisting of the following parts:		
MS24665-132	4	Cotter Pin		Discard old, install new
7496028-2	1	Trim Arm Crank Assembly	7461568-18	Discard
SB700-27-01	1	Instructions		

* Please contact Textron Aviation Parts Distribution for current cost and availability of parts listed in this service document. Phone at 1-800-835-4000 (Domestic) or 1-316-517-5603 (International).

For more information, please visit the TAPD Support & Aftermarket Account Management website at <https://ww2.txtav.com/Parts/Promos/TAPD>.

Based on availability and lead times, parts may require advanced scheduling.

TITLE

FLIGHT CONTROLS - RUDDER FEEL AND TRIM MODIFICATION

TO:

Cessna Model 700 (Citation Longitude) Aircraft Owner

REASON

There is potential interference between the co-pilot left rudder pedal and the rudder feel and trim crank arm assembly when there is some left trim input, rudder pedals adjusted full forward, full left rudder and then a left brake application.

COMPLIANCE

MANDATORY. This service document must be accomplished within 800 flight hours or 18 months from the date of receipt, whichever occurs first.

LABOR HOURS

WORK PHASE	LABOR-HOURS
Modification	18

MATERIAL AVAILABILITY

PART NUMBER	AVAILABILITY	COST
SB700-27-01	*	*

* Please contact Textron Aviation Parts Distribution for current cost and availability of parts listed in this service document. Phone at 1-800-835-4000 (Domestic) or 1-316-517-5603 (International).

For more information, please visit the TAPD Support & Aftermarket Account Management website at <https://ww2.txtav.com/Parts/Promos/TAPD>.

Based on availability and lead times, parts may require advanced scheduling.

WARRANTY

This service document is *mandatory*. Eligible airplanes may qualify for parts and labor coverage to the extent noted in the *Labor Hours* and *Material Availability* sections of this document.

April 29, 2021

SB700-27-01
Page 1 of 2

 Textron Aviation Customer Service, P.O. Box 7706, Wichita, KS 67277, U.S.A. 1-316-517-5800

This document contains technical data and is subject to U.S. export regulations. This information has been exported from the United States in accordance with export administration regulations. Diversion contrary to U.S. law is prohibited. ECCN: 9E991

Eligibility: Airplanes identified within the serial number effectivity of this service document must have active Airframe warranty coverage on the original issue date of this document and the coverage must be active on the day the work is accomplished.

Parts Coverage: Textron Aviation-owned and Textron Aviation-authorized Service Facilities, operators, or other maintenance facilities may submit a claim for the parts required to accomplish this service document as defined in the *Material Availability* section of this document.

Labor Coverage: Textron Aviation-owned and Textron Aviation-authorized Service Facilities rated to perform maintenance on the specific model of Cessna Aircraft may submit a claim for the labor necessary to accomplish this service document as defined in the *Labor Hours* section of this document.

Credit Application: After this service document has been accomplished, a claim must be submitted to Textron Aviation within 30 days of the service document completion. Claims for compliance of this service document are to be filed as a W4 type claim.

Please submit your claim form online at ww2.txtav.com/Parts or email the completed Textron Aviation Claim Form to warranty@txtav.com. If submitted on-line a Return Authorization will be provided. If a paper claim is submitted your claim will be entered into the system and a Return Authorization will be sent to you.

The Return Authorization must accompany any required return parts (see *Material Availability*), to the point of purchase.

Parts to be returned to Textron Aviation Parts Distribution should be forwarded to:

Textron Aviation Parts Distribution
Warranty Administration
285 South Greenwich Road
Bldg B89, Docks 1-4
Wichita, KS 67206
USA

Expiration: April 29, 2023 (after this date the owner/operator assumes the responsibility for compliance costs)

Textron Aviation reserves the right to void continued airplane warranty coverage for the parts affected by this service document until the service document is accomplished.

NOTE: As a convenience, service documents are now available online to all our customers through a simple, free-of-charge registration process. If you would like to sign up, please visit the Customer Access link at www.txtavsupport.com to register.