

TITLE

LIGHTS - LED WING INSPECTION LIGHT INSTALLATION

EFFECTIVITY**MODEL**

208B

SERIAL NUMBERS

208B0001 thru 208B4999

The equivalent of this service document has been incorporated on production airplanes 208B5000 and On.

REASON

A LED wing inspection light is available as a replacement for the incandescent wing inspection light (ice light).

NOTE: The incandescent ice detector light is the same light as the wing inspection light.

DESCRIPTION

This service bulletin provides parts and instructions to replace the incandescent wing inspection lights with LED wing inspection lighting.

COMPLIANCE

OPTIONAL. This service bulletin can be accomplished at the discretion of the owner.

A service document published by Textron Aviation may be recorded as *completed* in an aircraft log only when the following requirements are satisfied:

- 1) The mechanic must complete all of the instructions in the service document, including the intent therein.
- 2) The mechanic must correctly use and install all applicable parts supplied with the service document kit. Only with written authorization from Textron Aviation can substitute parts or rebuilt parts be used to replace new parts.
- 3) The mechanic or airplane owner must use the technical data in the service document only as approved and published.
- 4) The mechanic or airplane owner must apply the information in the service document only to aircraft serial numbers identified in the *Effectivity* section of the document.
- 5) The mechanic or airplane owner must use maintenance practices that are identified as acceptable standard practices in the aviation industry and governmental regulations.

No individual or corporate organization other than Textron Aviation is authorized to make or apply any changes to a Textron Aviation-issued service document or flight manual supplement without prior written consent from Textron Aviation.

Textron Aviation is not responsible for the quality of maintenance performed to comply with this document, unless the maintenance is accomplished at a Textron Aviation-owned Service Center.

APPROVAL

Textron Aviation received FAA approval for the technical data in this publication that changes the airplane type design.

January 15, 2021

CAB-33-06
Page 1 of 10

Textron Aviation Customer Service, P.O. Box 7706, Wichita, KS 67277, U.S.A. 1-316-517-5800

This document contains technical data and is subject to U.S. export regulations. This information has been exported from the United States in accordance with export administration regulations. Diversion contrary to U.S. law is prohibited. ECCN: 9E991

FLIGHT CREW OPERATIONS

No Changes

CONSUMABLE MATERIAL

You must use the consumable materials that follow, or their equivalent, to complete this service document.

NAME	NUMBER	MANUFACTURER	USE
Adhesive	U000978 (Scotchweld 1300L)	Textron Aviation Parts Distribution 7121 Southwest Boulevard Wichita, KS 67215	To bond gasket to doubler.
Sealant Type XIV, Class B	U470545 (2.5 ounce Simkit)	Textron Aviation Parts Distribution	To seal ice detector light to fairing gap.

TOOLING

No specialized tooling is required to complete this service document.

WEIGHT AND BALANCE INFORMATION

Negligible.

REFERENCES

Cessna Model 208 Series Maintenance Manual

NOTE: To make sure all publications used are complete and current. Refer to www.txtavsupport.com.

PUBLICATIONS AFFECTED

None

ACCOMPLISHMENT INSTRUCTIONS

1. Prepare the airplane for maintenance.
 - A. Make sure that the airplane is electrically grounded.
 - B. Make sure that all switches are in the OFF/NORM position.
 - C. Disconnect electrical power from the airplane.
 - (1) Disconnect external electrical power.
 - (2) Disconnect the airplane battery.
 - D. Attach maintenance warning tags to the battery and external power receptacle that have "**DO NOT CONNECT ELECTRICAL POWER - MAINTENANCE IN PROGRESS**" written on them.
2. Remove the left wing to fuselage 2620023 Fairing.
 - A. Disconnect the connector for the wing inspection light.
3. (Refer to Figure 1, Sheet 1.) Remove the wing inspection light assembly, bracket, and socket from the 2620023 Fairing and discard. (Refer to the Model 208 Series Maintenance Manual, Chapter 33, Incandescent Ice Detector Light - Maintenance Practices.)
4. Locate and carefully drill-out the eight rivets in the 2620023 Fairing to remove the doubler. Discard the doubler.

5. (Refer to Figure 2, Sheet 1 and Sheet 2.) Install the new 2618009-2S Doubler as follows:

NOTE: The light assembly has a small drain hole. When the doubler is positioned on the fairing, before match drilling the holes, temporarily attach the light assembly to make sure the drain hole is located in the down position. If the drain hole is not on the bottom, change the position of the light assembly or rotate the doubler until the drain hole is on the bottom.

 - A. Temporarily attach the WIL200-01 Light Assembly to the 2618009-2S Doubler with two MS24693-S50 Screws.
 - B. Center the WIL200-01 Light Assembly and 2618009-2S Doubler in the hole of the 2620023 Fairing.
 - C. Make sure the drain hole of the WIL200-01 Light Assembly is on the bottom, adjust the assembly as necessary.
 - D. Identify the position of the 2618009-2S Doubler to the Fairing.

NOTE: This identification will be used to properly align the doubler when it is riveted to the fairing to make sure the light assembly drain hole is on the bottom when assembled.
 - E. Remove the WIL200-01 Light Assembly from the 2618009-2S Doubler.
 - F. (Refer to Figure 2, Sheet 2, View B-B.) Match drill eight 0.128 Inch-Diameter holes.
 - G. Deburr the drilled holes.
 - H. Install the 2618009-2S Doubler on the 2620023 Fairing with eight MS20470A4-4A Rivets.
6. Use U000978 Adhesive and bond the 2618009-4 Gasket on the 2618009-2S Doubler Assembly making sure the holes are aligned.
7. (Refer to Figure 1, Sheet 2, Detail A and Figure 2, Sheet 2.) Position the WIL200-01 Light Assembly in the 2620023 Fairing with the drain hole on the bottom and attach with five MS24693-S50 Screws.
8. Do a check of the electrical bonding between the WIL200-01 Light Assembly and the 2618009-2S Doubler. (Refer to the Model 208 Series Maintenance Manual, Chapter 20, Electrical Bonding - Maintenance Practices.)
9. Seal the gap between the WIL200-01 Light Assembly and the 2620023 Fairing with U470545 Sealant (Type XIV, Class B).
10. Change the connector for the power and ground wire on the airplane side as follows: (Refer to the Model 208 Series Wiring Diagram Manual, Chapter 20 Standard Practices.)
 - A. (Refer to Figure 1, Sheet 1 and Figure 3, Before Modification.) Cut the wires close to the S2035-2 Housing and discard the S2035-2 Housing and S1636-1 Sockets. (Ref Des JC024.)
 - B. (Refer to Figure 3, After Modification.) Install one MS39029/58-363 Contact Pin on the ground wire.
 - C. (Refer to Figure 3, After Modification.) Install one SJS720200 Green Receptacle on the ground wire.
 - D. (Refer to Figure 3, After Modification.) Install one MS39029/56-351 Contact Socket on the power wire.
 - E. (Refer to Figure 3, After Modification.) Install one SJS720110 Yellow Plug on the power wire.
 - F. Use two S2209-1 Tie Straps to install the S4111-2A ID TAG, with (1PC025-1JC001) (1JC026-GF011), on the wires.
11. Use two S2209-1 Tie Straps to install the S4111-2A ID TAG, with (1J1-REDFC009) (1P1-BLKFC009), on the wires for the WIL200-01 Light Assembly.
12. (Refer to Figure 2.) Connect the SJS720XXX Connectors from the WIL200-01 Light Assembly to the airplane wiring and install the 2620023 Fairing.
13. Remove the maintenance warning tags and connect the airplane battery.

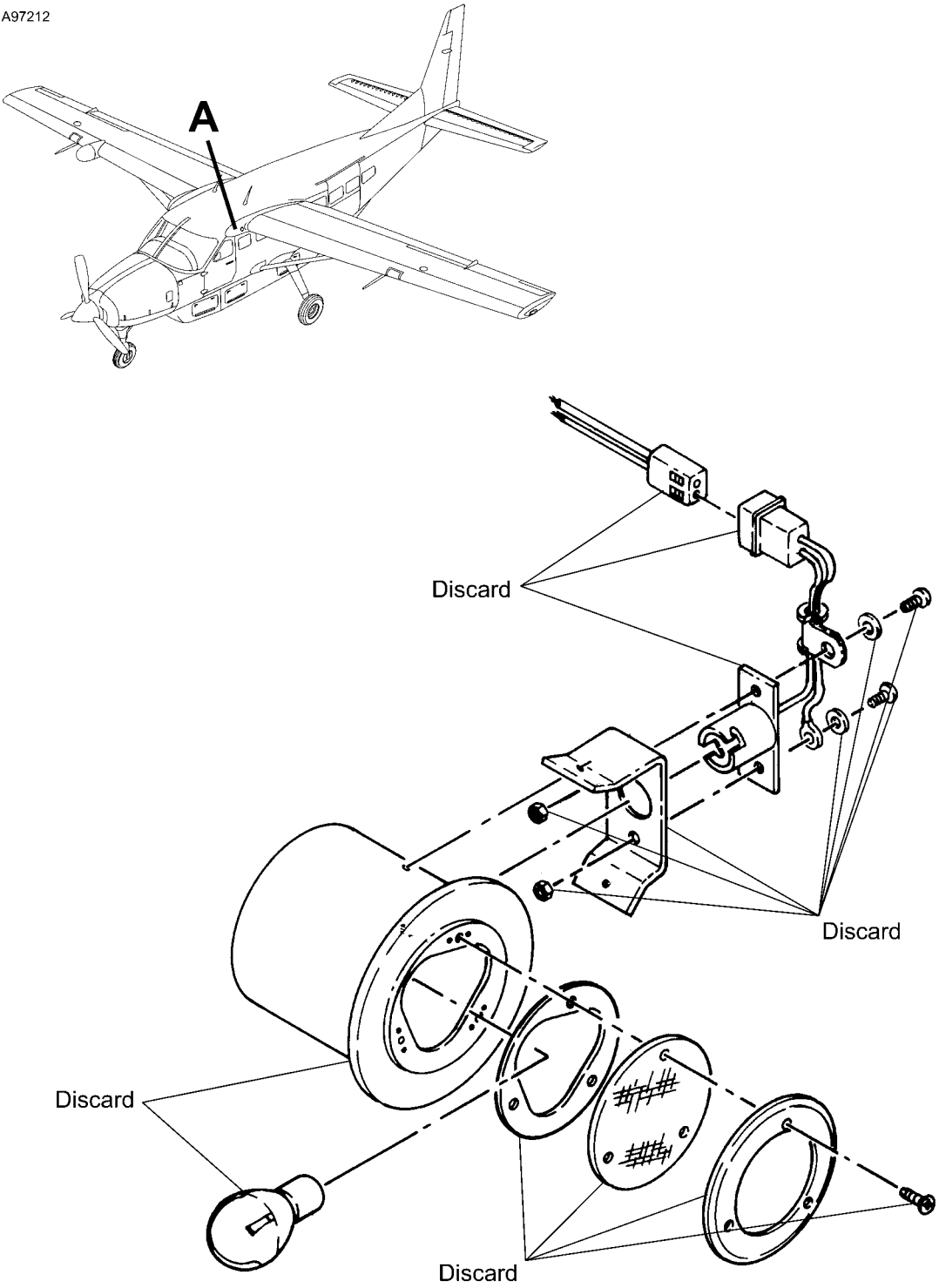
14. Complete an operational check of the LED Wing inspection light.
 - A. Set the BATTERY switch to the ON position.
 - B. Set the WING LIGHT switch to the ON position and make sure the wing inspection light illuminates.
NOTE: The WING LIGHT switch is a momentary ON switch, when the switch is released it will return to the off position.
 - C. Release the WING LIGHT switch.
 - D. Set the BATTERY switch to the OFF position.

15. Make an entry in the airplane logbook that states compliance and method of compliance with this service document.

NOTE: Textron Aviation recommends that compliance with all service documents is reported to a maintenance tracking system provider.

- Complete a record of compliance. (Maintenance Transaction Report, Log Book Entry, or other record of compliance.)
- Put a copy of the completed record of compliance in the airplane logbook.
- Send a copy of the completed record of compliance to the maintenance tracking system provider used.

A97212

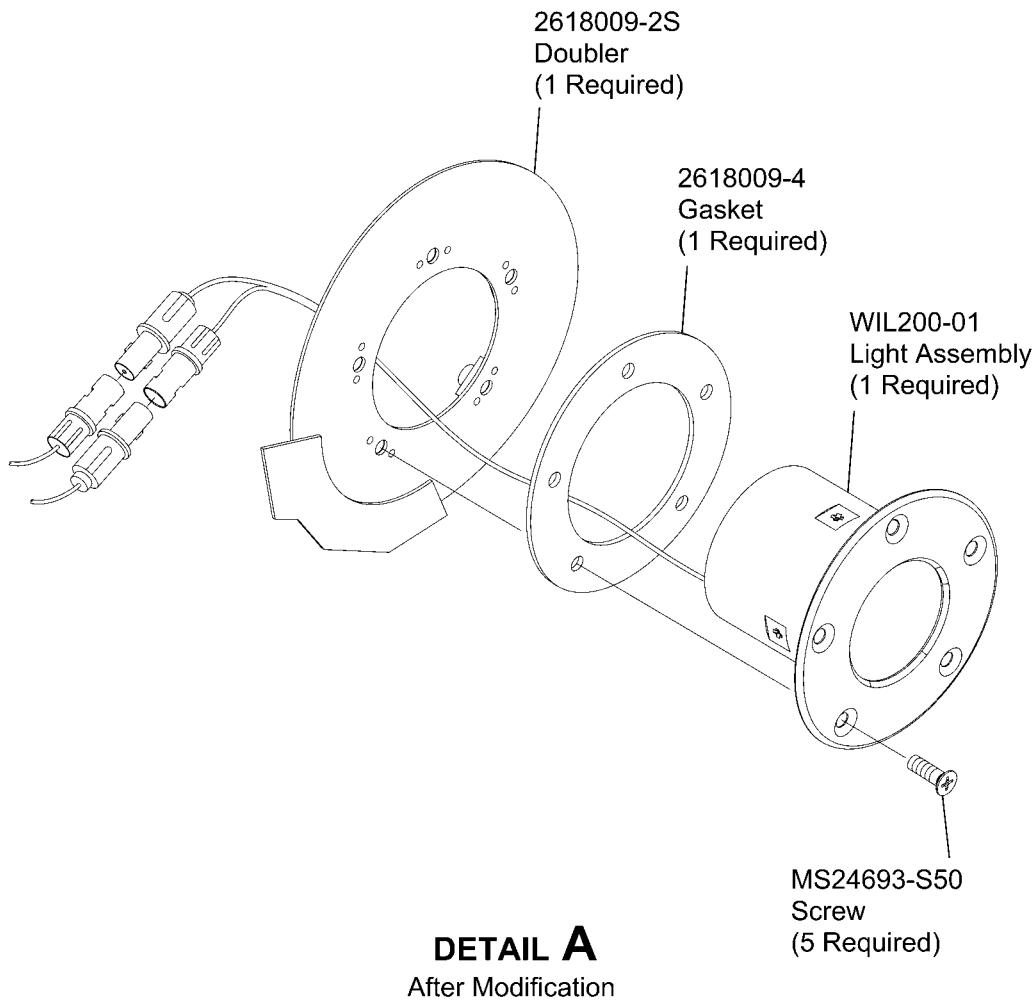


DETAIL A
Before Modification

Figure 1. Incandescent Wing Inspection Light Removal (Sheet 1)

2610T7004
A26181021A

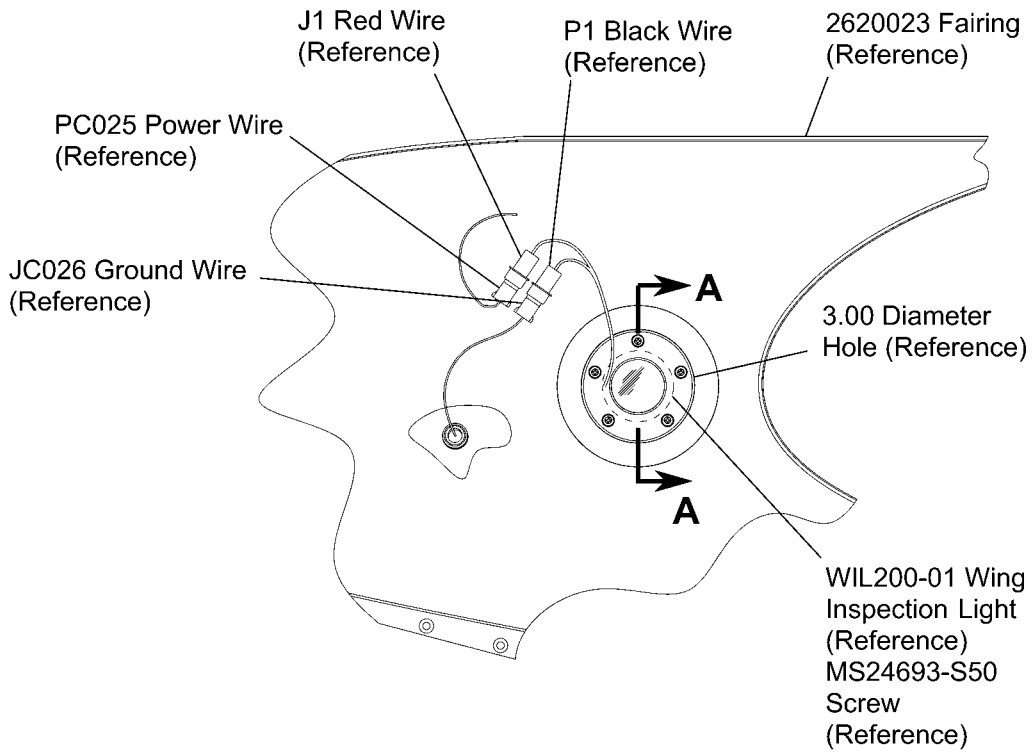
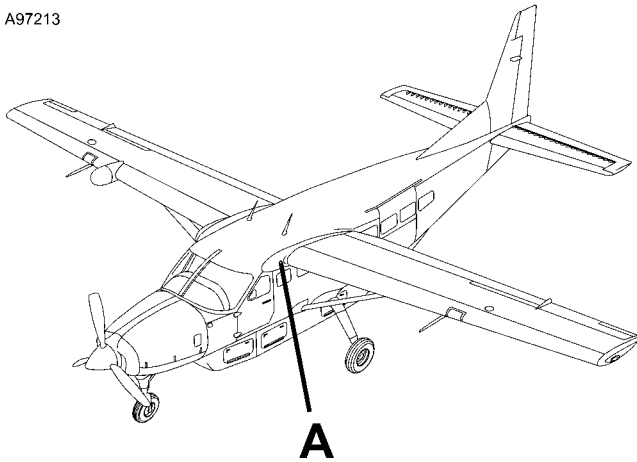
A97215



2618T1478

Figure 1. Incandescent Wing Inspection Light Removal (Sheet 2)

A97213

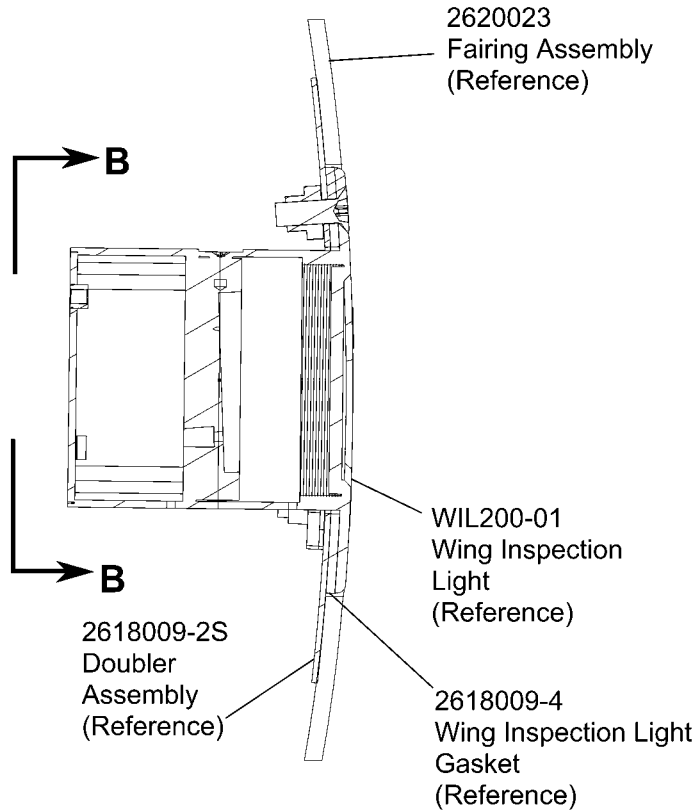


DETAIL A
Looking Inboard at Left Side

Figure 2. LED Wing Inspection Light Installation (Sheet 1)

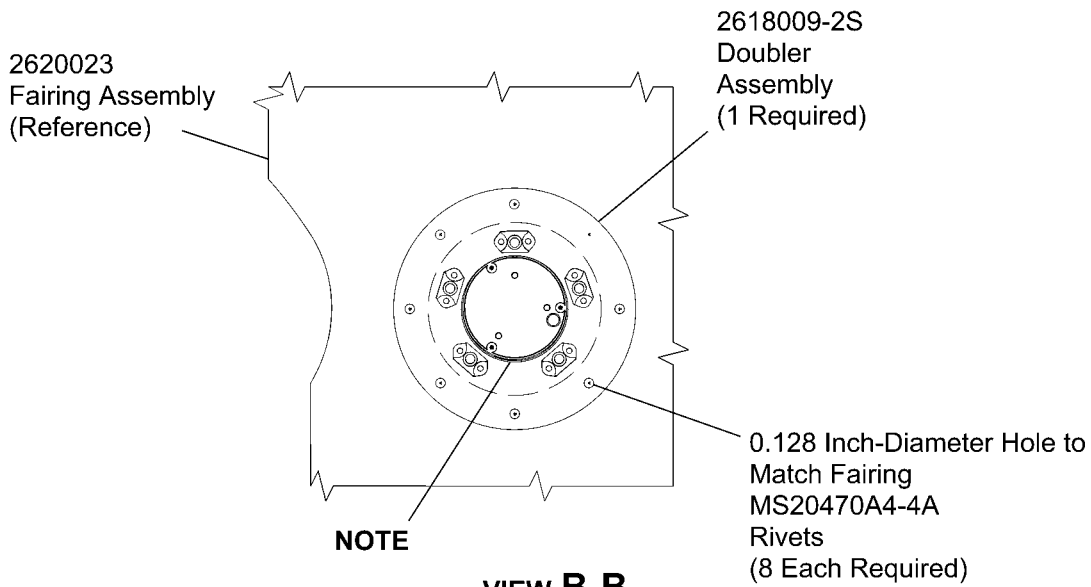
2610T7004
A26181021A

A97214



VIEW A-A

Looking Aft at FS 168.46



NOTE

VIEW B-B

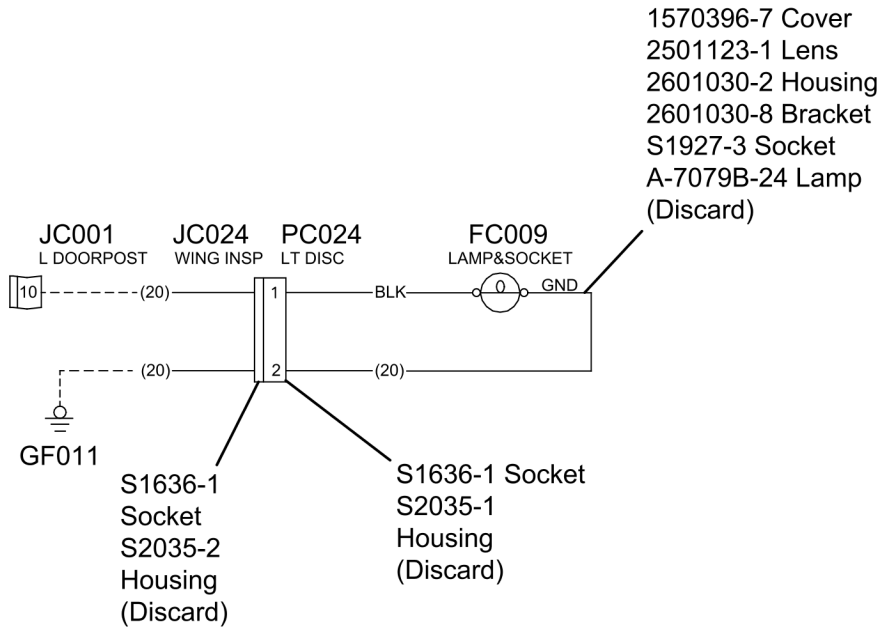
Looking Outboard at Left Side
Wires Not Shown

NOTE: Position light assembly so drain hole is on bottom.

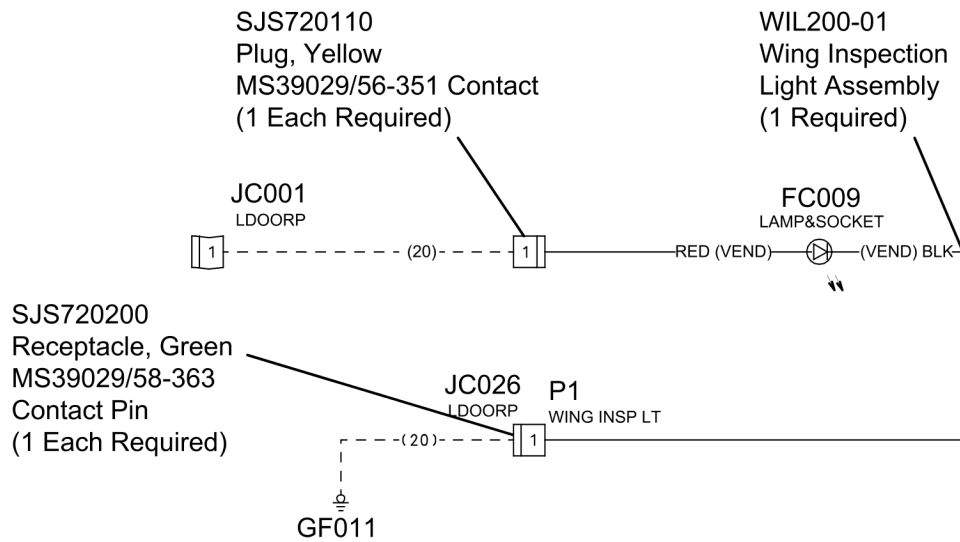
AA2618009-1
BB2618009-1

Figure 2. LED Wing Inspection Light Installation (Sheet 2)

A107267



Before Modification



After Modification

LEGEND	
	NEW WIRE
	EXISTING OR RETERMINATED WIRE
	DELETED WIRE

2677176B1
 2697389

Figure 3. Wiring Modification for Wing Inspection Light Connectors (Sheet 1)

MATERIAL INFORMATION

Order the kits below to install this modification.

NEW P/N	QUAN-TITY	KEY WORD	OLD P/N	INSTRUCTIONS/ DISPOSITION
CAB-33-06-0	1	Kit , consisting of the following parts:		
MS20470A4-4A	8	Rivets	Same	
MS24693-S50	5	Screw	N/A	Install light Assembly to Doubler
S2209-1	4	Tie Straps	N/A	Install ID Tags
WIL200-01	1	Wing Inspection Light	A-7079B-24	Discard Old Install New
2618009-4	1	Gasket	N/A	Install between light assembly and doubler
2618009-2S	1	Wing Inspection Light Ring Doubler Assembly	N/A	No pilot hole doubler to support light assembly
CAB-33-06	1	Instructions		

In addition to the CAB-33-06-0 kit, order the kit that follows to install this modification.

NEW P/N	QUAN-TITY	KEY WORD	OLD P/N	INSTRUCTIONS/ DISPOSITION
CAB-33-06-1	1	Kit , consisting of the following parts:		
M39029/56-351	1	Contact Socket	N/A	Install on airplane side power wire, (1PC025)
M39029/58-363	1	Contact Pin	N/A	Install on airplane side ground wire,(1JC026)
SJS720110	1	Plug, Yellow	N/A	for 1PC025
SJS720200	1	Receptacle, Green	N/A	For 1JC026
S4111-2A	1	ID TAG with (1J1-REDFC009) (1P1-BLKFC009) Written on it	N/A	Install on light assembly power and ground wires
S4111-2A	1	ID TAG,with (1PC025-1JC001) (1JC026-GF011) written on it	N/A	Install on airplane side power and ground wire for light assembly.

* Please contact Textron Aviation Parts Distribution for current cost and availability of parts listed in this service document. Phone at 1-800-835-4000 (Domestic) or 1-316-517-5603 (International). Send email to: parts@txtav.com.

Based on availability and lead times, parts may require advanced scheduling.

TITLE

LIGHTS - LED WING INSPECTION LIGHT INSTALLATION

TO:

Cessna Model 208B Aircraft Owner

REASON

A LED wing inspection light is available as a replacement for the incandescent wing inspection light (ice light).

NOTE: The incandescent ice detector light is the same light as the wing inspection light.

COMPLIANCE

OPTIONAL. This service bulletin can be accomplished at the discretion of the owner.

LABOR HOURS**WORK PHASE**

Modification

LABOR-HOURS

As Necessary

MATERIAL AVAILABILITY

PART NUMBER	AVAILABILITY	COST
CAB-33-06-0	*	*
CAB-33-06-1	*	*

* Please contact Textron Aviation Parts Distribution for current cost and availability of parts listed in this service document. Phone at 1-800-835-4000 (Domestic) or 1-316-517-5603 (International). Send email to: parts@txtav.com.

WARRANTY

None.

NOTE: As a convenience, service documents are now available online to all our customers through a simple, free-of-charge registration process. If you would like to sign up, please visit the "Customer Access" link at www.txtavsupport.com to register.

