

REVISION TRANSMITTAL

This sheet transmits Revision 1 to SL560XL-76-04, which:

- A. Changes the TOOLING section to no specialized tooling is required to complete this service document.
- B. Changes the Maintenance Manual reference in Step 5 to (Refer to the Model 560XL Maintenance Manual, Chapter 76, Throttle Quadrant Assembly - Adjustment/Test (Airplanes -6001 and On).)

NOTE: This revision replaces the original issue of SL560XL-76-04 in its entirety.

REVISION COMPLIANCE

NO EFFECT. Airplanes previously modified by this service letter are not affected by this revision.

LOG OF REVISIONS

Original Issue	November 11, 2020
Revision 1	November 24, 2020

MANDATORY**SL560XL-76-04****TITLE**

ENGINE CONTROLS - THROTTLE QUADRANT RVDT LINKAGE INSPECTION

EFFECTIVITY

MODEL	SERIAL NUMBERS
560XL (Citation XLS+)	-6001 thru -6290

REASON

It is possible that a rivet in the throttle quadrant RVDT linkage is not installed correctly, which may cause an uncontrolled thrust increase.

DESCRIPTION

This service letter provides parts and instructions to inspect the throttle quadrant RVDT linkage and replace the rivet in the RVDT linkage, if necessary.

COMPLIANCE

MANDATORY. This service document must be accomplished within the next Time Limited Dispatch Check not to exceed 170 airplane hours or 6 months from the date of receipt, whichever occurs first.

A service document published by Textron Aviation may be recorded as *completed* in an aircraft log only when the following requirements are satisfied:

- 1) The mechanic must complete all of the instructions in the service document, including the intent therein.
- 2) The mechanic must correctly use and install all applicable parts supplied with the service document kit. Only with written authorization from Textron Aviation can substitute parts or rebuilt parts be used to replace new parts.
- 3) The mechanic or airplane owner must use the technical data in the service document only as approved and published.
- 4) The mechanic or airplane owner must apply the information in the service document only to aircraft serial numbers identified in the *Effectivity* section of the document.
- 5) The mechanic or airplane owner must use maintenance practices that are identified as acceptable standard practices in the aviation industry and governmental regulations.

No individual or corporate organization other than Textron Aviation is authorized to make or apply any changes to a Textron Aviation-issued service document or flight manual supplement without prior written consent from Textron Aviation.

Textron Aviation is not responsible for the quality of maintenance performed to comply with this document, unless the maintenance is accomplished at a Textron Aviation-owned Service Center.

CONSUMABLE MATERIAL

No specialized consumable materials are required to complete this service document.

TOOLING

No specialized tooling is required to complete this service document.

REFERENCES

Cessna Model 560XL Maintenance Manual

Original Issue - November 12, 2020
Revision 1 - November 24, 2020

SL560XL-76-04
Page 1 of 6

Textron Aviation Customer Service, P.O. Box 7706, Wichita, KS 67277, U.S.A. 1-316-517-5800

This document contains technical data and is subject to U.S. export regulations. This information has been exported from the United States in accordance with export administration regulations. Diversion contrary to U.S. law is prohibited. ECCN: 9E991

Cessna Model 560XL Structural Repair Manual

PUBLICATIONS AFFECTED

None

ACCOMPLISHMENT INSTRUCTIONS

1. Prepare the airplane for maintenance.
 - A. Make sure that the airplane is electrically grounded.
 - B. Make sure that all switches are in the OFF/NORM position.
 - C. Disconnect electrical power from the airplane.
 - (1) Disconnect the airplane battery.
 - (2) Disconnect external electrical power.
 - D. Attach maintenance warning tags to the battery and external power receptacle that have "**DO NOT CONNECT ELECTRICAL POWER - MAINTENANCE IN PROGRESS**" written on them.
2. Remove the throttle quadrant. (Refer to the Model 560XL Maintenance Manual, Chapter 76, Throttle Quadrant Assembly - Removal/Installation (Airplanes -6001 and On).)
3. (Refer to Figure 1, Detail A, Detail B and View A-A.) Inspect the rivet in the left and right RVDT linkage that connects the Sensor Link and Sensor Drive Arm.

NOTE: Use precision measuring equipment with an accuracy of at least three decimal places, such as calipers or micrometers.

- A. Remove and keep the forward slide cover assembly to access the RVDT linkage.
- B. The minimum allowable diameter of the rivet butt is 0.210 inch and the minimum allowable height is 0.040 inch.
 - (1) If both rivets are installed correctly, go to Step 3.C.
 - (2) If either of the rivets is not installed correctly, do the steps that follow:
 - (a) For rivets that do not have the correct minimum diameter and are above the minimum height of 0.040 inch, do the steps that follow:

CAUTION: Do not use a rivet gun on the installed linkage to prevent damage to RVDTs.

- 1 Use a C-squeeze to achieve the correct minimum diameter of 0.210 inch. Make sure the rivet butt height remains between 0.040 and 0.080 inch.
- 2 Inspect the rivet butt for cracks.
 - a If cracks are not found, go to Step 3.C.
 - b If cracks are found, go to Step 3.B.(2)(b)1.

- (b) For rivets that fail the minimum height or fail both minimum height and minimum diameter, do the steps that follow:
- 1 Mark the RVDT shaft and linkage to create an alignment mark with a fine tip marker.
 - 2 Remove the clamp from the applicable sensor link. Keep the attaching hardware except for the MS20142-06 Nut.
 - 3 Remove the applicable RVDT linkage from the throttle quadrant.
 - a Keep the attaching hardware except for the cotter pins and nuts.
 - b Remove and discard the current MS20470AD6-7.5 Rivet. (Refer to the Model 560XL Structural Repair Manual, Chapter 51, Fastener Installation and Removal.)
 - 4 Install a new MS20470AD6-7.5 Rivet through the bearing in the Sensor Drive Arm and Sensor Link.
 - a Make sure the butt of the rivet is 0.210 to 0.225 inch diameter and the height is 0.040 to 0.080 inch.

NOTE: It is permissible to shave the rivet butt as needed to obtain the correct height dimension if the maximum diameter is correct.

NOTE: Make sure the linkage moves freely after installing the rivet.
 - 5 Re-install the removed linkage with the kept hardware with one new MS21042-06 Nut, one MS24665-134 Cotter Pin, and one MS17826-3 Nut.
 - a Make sure the RVDT shaft and linkage alignment marks made in Step 3.(b),1 line up.
 - 6 Install the kept clamp on the sensor link with the kept hardware and one new MS21042-06 Nut.

(c) Go to Step 3.C.

C. Re-install the removed forward slide cover assembly.

4. Re-install the 6665260-4 Throttle Quadrant. (Refer to the Model 560XL Maintenance Manual, Chapter 76, Throttle Quadrant Assembly - Removal/Installation (Airplanes -6001 and On).)
5. If the RVDT linkage was removed for repair, do the Throttle Quadrant Test (Installed In the Airplane). (Refer to the Model 560XL Maintenance Manual, Chapter 76, Throttle Quadrant Assembly - Adjustment/Test (Airplanes -6001 and On).)
6. Remove the maintenance warning tags and connect the airplane battery.
7. Do the Time Limited Dispatch task 76-16-00-7100 to make sure there are no TLD indications that indicate Y.
8. Make an entry in the airplane logbook that states compliance and method of compliance with this service document.

NOTE: Textron Aviation recommends that compliance with all service documents is reported to a maintenance tracking system provider.

- Complete a record of compliance. (Maintenance Transaction Report, Log Book Entry, or other record of compliance.)
- Put a copy of the completed record of compliance in the airplane logbook.
- Send a copy of the completed record of compliance to the maintenance tracking system provider used.

A110149

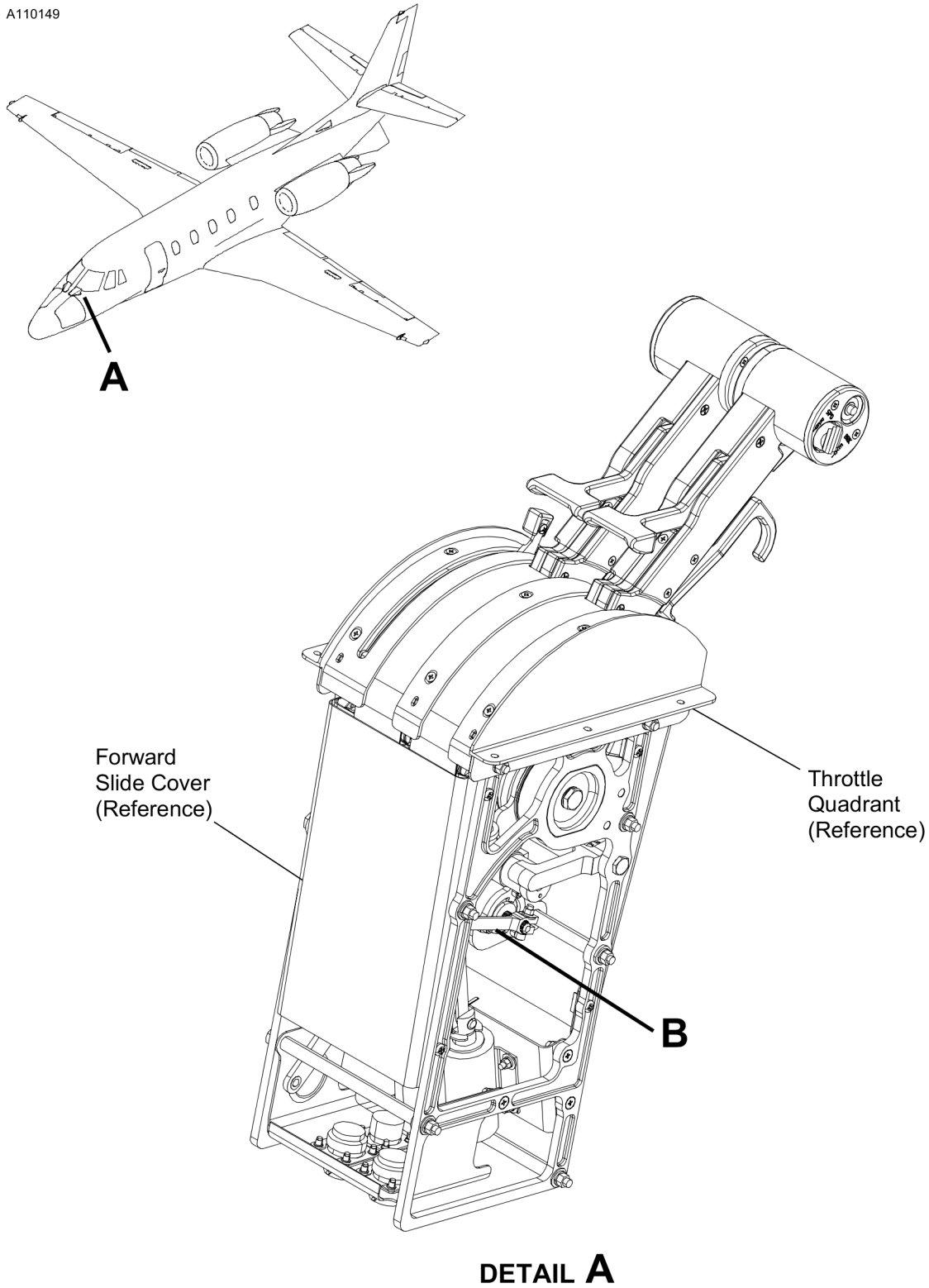
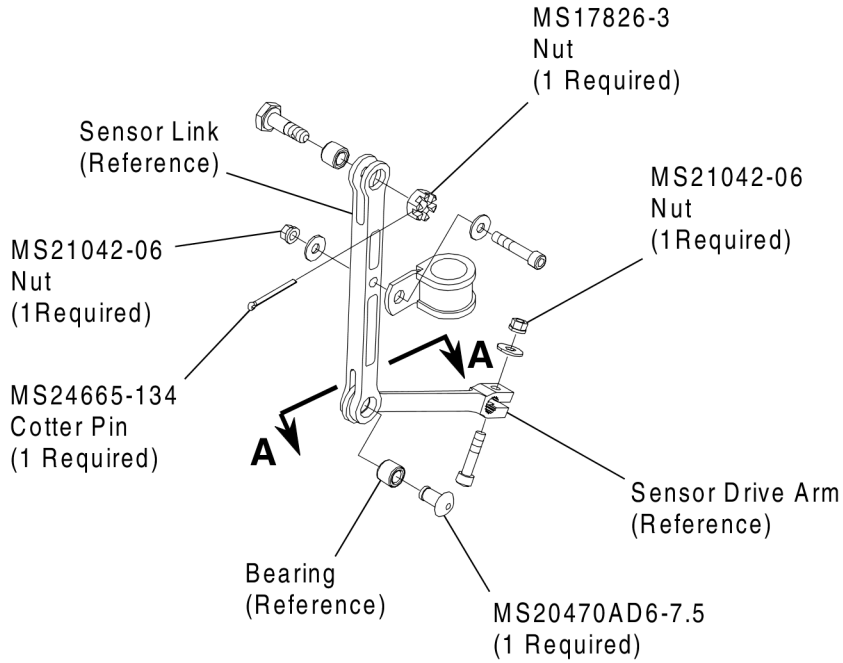


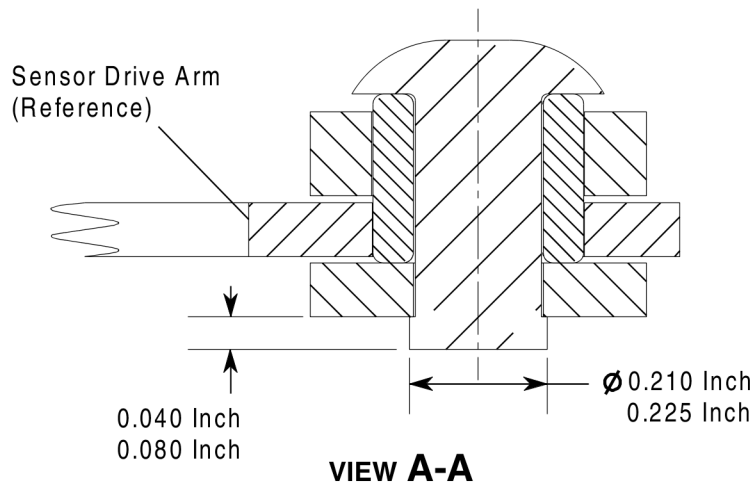
Figure 1. Throttle Quadrant RVDT Linkage Inspection (Sheet 1)

6610T1001
A6619T1313

A110150



DETAIL B



B6615T1091
AA6665T267-41

Figure 1. Throttle Quadrant RVDT Linkage Inspection (Sheet 2)

MANDATORY**SL560XL-76-04****MATERIAL INFORMATION**

It may be necessary to order the parts below to install this modification.

NEW P/N	QUAN- TITY	KEY WORD	OLD P/N	INSTRUCTIONS/ DISPOSITION
MS17826-3	As Required	Nut	Same	Discard
MS20470AD6-7.5	As Required	Rivet	Same	Discard
MS21042-06	As Required	Nut	Same	Discard
MS24665-134	As Required	Cotter Pin	Same	Discard

* Please contact Textron Aviation Parts Distribution for current cost and availability of parts listed in this service document. Phone at 1-800-835-4000 (Domestic) or 1-316-517-5603 (International). Send email to: parts@txtav.com.

Based on availability and lead times, parts may require advanced scheduling.

TITLE

ENGINE CONTROLS - THROTTLE QUADRANT RVDT LINKAGE INSPECTION

TO:

Citation XLS+ Owner

REASON

It is possible that a rivet in the throttle quadrant RVDT linkage is not installed correctly, which may cause an uncontrolled thrust increase.

COMPLIANCE

MANDATORY. This service document must be accomplished within 170 flight hours or 6 months from the date of receipt, whichever occurs first.

LABOR HOURS

WORK PHASE	LABOR-HOURS
Test and Inspection	4.5
Modification	1.5

MATERIAL AVAILABILITY

PART NUMBER	AVAILABILITY	COST
MS17826-3	*	*
MS20470AD6-7.5	*	*
MS21042-06	*	*
MS24665-134	*	*

* Please contact Textron Aviation Parts Distribution for current cost and availability of parts listed in this service document. Phone at 1-800-835-4000 (Domestic) or 1-316-517-5603 (International). Send email to: parts@txtav.com.

Based on availability and lead times, parts may require advanced scheduling.

In cases where the required part(s) are approved as exchange, order the exchange part and, upon completion, expedite the return of the removed part to avoid return penalties. Contact the Textron Aviation Parts Distribution Sales Desk for availability of exchange parts.

WARRANTY

This service document is *mandatory*. Eligible airplanes may qualify for parts and labor coverage to the extent noted in the *Labor Hours* and *Material Availability* sections of this document.

November 12, 2020

SL560XL-76-04
Page 1 of 2

Textron Aviation Customer Service, P.O. Box 7706, Wichita, KS 67277, U.S.A. 1-316-517-5800

This document contains technical data and is subject to U.S. export regulations. This information has been exported from the United States in accordance with export administration regulations. Diversion contrary to U.S. law is prohibited. ECCN: 9E991

Eligibility: Airplanes identified within the serial number effectivity of this service document must have active Airframe warranty coverage on the original issue date of this document and the coverage must be active on the day the work is accomplished.

Parts Coverage: Textron Aviation-owned and Textron Aviation-authorized Service Facilities, operators, or other maintenance facilities may submit a claim for the parts required to accomplish this service document as defined in the *Material Availability* section of this document.

Labor Coverage: Textron Aviation-owned and Textron Aviation-authorized Service Facilities rated to perform maintenance on the specific model of Cessna Aircraft may submit a claim for the labor necessary to accomplish this service document as defined in the *Labor Hours* section of this document.

Credit Application: After this service document has been accomplished, a claim must be submitted to Textron Aviation within 30 days of the service document completion. Claims for compliance of this service document are to be filed as a W4 type claim.

Please submit your claim form online at ww2.txtav.com/Parts or email the completed Textron Aviation Claim Form to warranty@txtav.com. If submitted on-line a Return Authorization will be provided. If a paper claim is submitted your claim will be entered into the system and a Return Authorization will be sent to you.

The Return Authorization must accompany any required return parts (see *Material Availability*), to the point of purchase.

Parts to be returned to Textron Aviation Parts Distribution should be forwarded to:

Textron Aviation Parts Distribution
Warranty Administration
285 South Greenwich Road
Bldg B89, Docks 1-4
Wichita, KS 67206
USA

Expiration: November 12, 2021 (after this date the owner/operator assumes the responsibility for compliance costs)

Textron Aviation reserves the right to void continued airplane warranty coverage for the parts affected by this service document until the service document is accomplished.

NOTE: As a convenience, service documents are now available online to all our customers through a simple, free-of-charge registration process. If you would like to sign up, please visit the Customer Access link at www.txtavsupport.com to register.