

TITLE

FLIGHT CONTROLS - INSTALL MISSING CATERPILLAR GROMMETS IN THE BULKHEAD CUTOUTS

EFFECTIVITY**MODEL**

208

208B

SERIAL NUMBERS

20800607 thru 20800609

208B5417 thru 208B5430

REASON

To install caterpillar grommets in the bulkhead cutouts to protect the elevator control cables.

DESCRIPTION

This service letter provides instructions to install caterpillar grommets in the bulkhead cutouts to protect the elevator control cables.

COMPLIANCE

RECOMMENDED. This service document should be accomplished at a scheduled maintenance period or inspection.

A service document published by Textron Aviation may be recorded as *completed* in an aircraft log only when the following requirements are satisfied:

- 1) The mechanic must complete all of the instructions in the service document, including the intent therein.
- 2) The mechanic must correctly use and install all applicable parts supplied with the service document kit. Only with written authorization from Textron Aviation can substitute parts or rebuilt parts be used to replace new parts.
- 3) The mechanic or airplane owner must use the technical data in the service document only as approved and published.
- 4) The mechanic or airplane owner must apply the information in the service document only to aircraft serial numbers identified in the *Effectivity* section of the document.
- 5) The mechanic or airplane owner must use maintenance practices that are identified as acceptable standard practices in the aviation industry and governmental regulations.

No individual or corporate organization other than Textron Aviation is authorized to make or apply any changes to a Textron Aviation-issued service document or flight manual supplement without prior written consent from Textron Aviation.

Textron Aviation is not responsible for the quality of maintenance performed to comply with this document, unless the maintenance is accomplished at a Textron Aviation-owned Service Center.

CONSUMABLE MATERIAL

You must use the consumable materials that follow, or their equivalent, to complete this service document.

| NAME | NUMBER | MANUFACTURER | USE |
|----------|---------------------------------|--|-----------------------------------|
| Adhesive | U000701, Type I, Class B (9309) | Textron Aviation Parts Distribution 7121 Southwest Boulevard Wichita, KS 67215 | To bond the caterpillar grommets. |

January 11, 2019

CAL-27-06
Page 1 of 9

Textron Aviation Customer Service, P.O. Box 7706, Wichita, KS 67277, U.S.A. 1-316-517-5800

This document contains technical data and is subject to U.S. export regulations. This information has been exported from the United States in accordance with export administration regulations. Diversion contrary to U.S. law is prohibited. ECCN: 9E991

TOOLING

No specialized tooling is required to complete this service document.

REFERENCES

Cessna Model 208/208B Maintenance Manual

PUBLICATIONS AFFECTED

None

ACCOMPLISHMENT INSTRUCTIONS

1. Prepare the airplane for maintenance.
 - A. Make sure that the airplane is electrically grounded.
 - B. Make sure that all switches are in the OFF/NORM position.
 - C. Disconnect electrical power from the airplane.
 - (1) Disconnect the airplane battery.
 - (2) Disconnect external electrical power.
 - D. Attach maintenance warning tags to the battery and external power receptacle that have **"DO NOT CONNECT ELECTRICAL POWER - MAINTENANCE IN PROGRESS"** written on them.
2. Inspect for the caterpillar grommets in the cable cutouts.
 - A. (Model 208) (Refer to Figure 1, View A-A, View B-B and View C-C.) Inspect for the caterpillar grommets at FS 246.50 and FS 271.50.
 - (1) Remove the passenger seats at FS 246.50 and FS 271.50 if installed. (Refer to the Model 208/208B Maintenance Manual, Chapter 25, Passenger Seats - Maintenance Practices.)
 - (2) Remove the carpet or vinyl cover and plywood floor covers near FS 246.50 and FS 271.50 to get access to the floorboard panels. (Refer to the Model 208/208B Maintenance Manual, Chapter 25, Floor Covering/Control Column Cover - Maintenance Practices.)
 - (3) Remove the access panels 251FL, 255AL and 255DL to get access to the cable cutouts at FS 246.50 and FS 271.50. (Refer to the Model 208/208B Maintenance Manual, Chapter 6, Access Plates and Panels Identification - Description and Operation.)
 - (4) Inspect for the presence of caterpillar grommets
 - (a) If the caterpillar grommets are installed around the entire periphery of the cable cutout at FS 246.50 and FS 271.50 as shown, go to Step 2.A.(5).

- (b) If the caterpillar grommets are not installed around the entire periphery of the cable cutout as shown at either FS 246.50 and FS 271.50 do the steps that follow.

- 1 Install the grommets in the cable cutout at FS 246.50, if necessary.

NOTE: If the top section of the grommet is installed, it is permissible to remove the bottom section and install the proper length to go around the missing and removed section as one piece.

- a Cut the H880015 Grommet to a length that will enable the grommet to go around the entire cutout.
- b Cut the H880013 Grommet to a length that will enable the grommet to go around the entire cutout.
- c Clean the cable cutout with Methyl n-Propyl Ketone. (Refer to the Model 208/208B Maintenance Manual, Chapter 20, Adhesive and Solvent Bonding - Maintenance Practices.)
- d Apply U000701 Adhesive to the mating surface of the applicable cable cutout and the grommets. (Refer to the Model 208/208B Maintenance Manual, Chapter 20, Adhesive Solvent Bonding - Maintenance Practices.)
- e Install the H880015 Grommet and H880013 Grommet in the cable cutout.
- f Clean any excess sealer squeeze out with Methyl n-Propyl Ketone.

- 2 Install the grommets at FS 271.50, if necessary.

NOTE: If the top section of the grommet is installed, it is permissible to remove the bottom section and install the proper length to go around the missing and removed section as one piece.

- a Cut the H880015 Grommet to a length that will enable the grommet to go around the entire cutout.
- b Cut the H880013 Grommet to a length that will enable the grommet to go around the entire cutout.
- c Clean the cable cutout with Methyl n-Propyl Ketone. (Refer to the Model 208/208B Maintenance Manual, Chapter 20, Adhesive and Solvent Bonding - Maintenance Practices.)
- d Apply U000701 Adhesive to the mating surface of the applicable cable cutout and the grommets. (Refer to the Model 208/208B Maintenance Manual, Chapter 20, Adhesive Solvent Bonding - Maintenance Practices.)
- e Install the H880015 Grommet and H880013 Grommet in the cable cutout.
- f Clean any excess sealer squeeze out with Methyl n-Propyl Ketone.

- (5) Install floorboard access panels 251FL, 255AL and 255DL. (Refer to the Model 208/208B Maintenance Manual, Chapter 6, Access Plates and Panels Identification - Description and Operation.)
- (6) Install the carpet or vinyl cover and plywood floor covers near FS 246.50 and FS 271.50. (Refer to the Model 208/208B Maintenance Manual, Chapter 25, Floor Covering/Control Column Cover - Maintenance Practices.)
- (7) Install passenger seats at FS 246.50 and FS 271.50 if removed. (Refer to the Model 208/208B Maintenance Manual, Chapter 25, Cabin Upholstery - Maintenance Practices.)
- (8) Go to Step 3.

- B. (Model 208B) (Refer to Figure 1, View A-A, View B-B and View C-C.) Inspect for the caterpillar grommets at FS 294.50 and FS 319.50.
- (1) Remove passenger seats at FS 294.50 and FS 319.50 if installed. (Refer to the Model 208/208B Maintenance Manual, Chapter 25, Cabin Upholstery - Maintenance Practices.)
 - (2) Remove the carpet or vinyl cover and plywood floor covers near FS 294.50 and FS 319.50 to get access to the floorboard panels. (Refer to the Model 208/208B Maintenance Manual, Chapter 25, Floor Covering/Control Column Cover - Maintenance Practices.)
 - (3) Remove access panels 255RL, 255TL and 255VL to get access to the cable cutouts at FS 294.50 and FS 319.50. (Refer to the Model 208/208B Maintenance Manual, Chapter 6, Access Plates and Panels Identification - Description and Operation.)
 - (4) Inspect for the presence caterpillar grommets
 - (a) If the caterpillar grommets are installed around the entire periphery of the cable cutout at FS 294.50 and FS 319.50 as shown, go to Step 2.B(5).

- (b) If the caterpillar grommets are not installed around the entire periphery of the cable cutout as shown at either FS 294.50 and FS 319.50 as shown, do the steps that follow:

- 1 Install the grommets in the cable cutout at FS 294.50, if necessary.

NOTE: If the top section of the grommet is installed, it is permissible to remove the bottom section and install the proper length to go around the missing and removed section as one piece.

- a Cut the H880015 Grommet to a length that will enable the grommet to go around the entire cutout.
- b Cut the H880013 Grommet to a length that will enable the grommet to go around the entire cutout.
- c Clean the cable cutout with Methyl n-Propyl Ketone. (Refer to the Model 208/208B Maintenance Manual, Chapter 20, Adhesive and Solvent Bonding - Maintenance Practices.)
- d Apply U000701 Adhesive to the mating surface of the applicable cable cutout and the grommets. (Refer to the Model 208/208B Maintenance Manual, Chapter 20, Adhesive Solvent Bonding - Maintenance Practices.)
- e Install the H880015 Grommet and H880013 Grommet in the cable cutout.
- f Clean any excess sealer squeeze out with Methyl n-Propyl Ketone.

- 2 Install the grommets at FS 319.50, if necessary.

NOTE: If the top section of the grommet is installed, it is permissible to remove the bottom section and install the proper length to go around the missing and removed section as one piece.

- a Cut the H880015 Grommet to a length that will enable the grommet to go around the entire cutout.
- b Cut the H880013 Grommet to a length that will enable the grommet to go around the entire cutout.
- c Clean the cable cutout with Methyl n-Propyl Ketone. (Refer to the Model 208/208B Maintenance Manual, Chapter 20, Adhesive and Solvent Bonding - Maintenance Practices.)
- d Apply U000701 Adhesive to the mating surface of the applicable cable cutout and the grommets. (Refer to the Model 208/208B Maintenance Manual, Chapter 20, Adhesive Solvent Bonding - Maintenance Practices.)
- e Install the H880015 Grommet and H880013 Grommet in the cable cutout.
- f Clean any excess sealer squeeze out with Methyl n-Propyl Ketone.

- (5) Install floorboard access panels 255RL, 255TL and 255VL. (Refer to the Model 208/208B Maintenance Manual, Chapter 25, Rear Compartment Wall - Maintenance Practices.)

- (6) Install the carpet or vinyl cover and plywood floor covers near FS 294.50 and FS 319.50. (Refer to the Model 208/208B Maintenance Manual, Chapter 25, Floor Covering/Control Column Cover - Maintenance Practices.)

- (7) Go to Step 3.

3. Remove the maintenance warning tags and connect the airplane battery.

4. Make an entry in the airplane logbook that states compliance and method of compliance with this service document.

NOTE: Textron Aviation recommends that compliance with all service documents is reported to Camp Systems International.

- Complete a record of compliance. (Maintenance Transaction Report, Log Book Entry, or other record of compliance.)
- Put a copy of the completed record of compliance in the airplane logbook.
- Send a copy of the completed record of compliance to: Camp Systems International Incorporated, 8201 East 34th Street North, Building 1100 Suite 1101 Wichita, KS 67226.

A105844

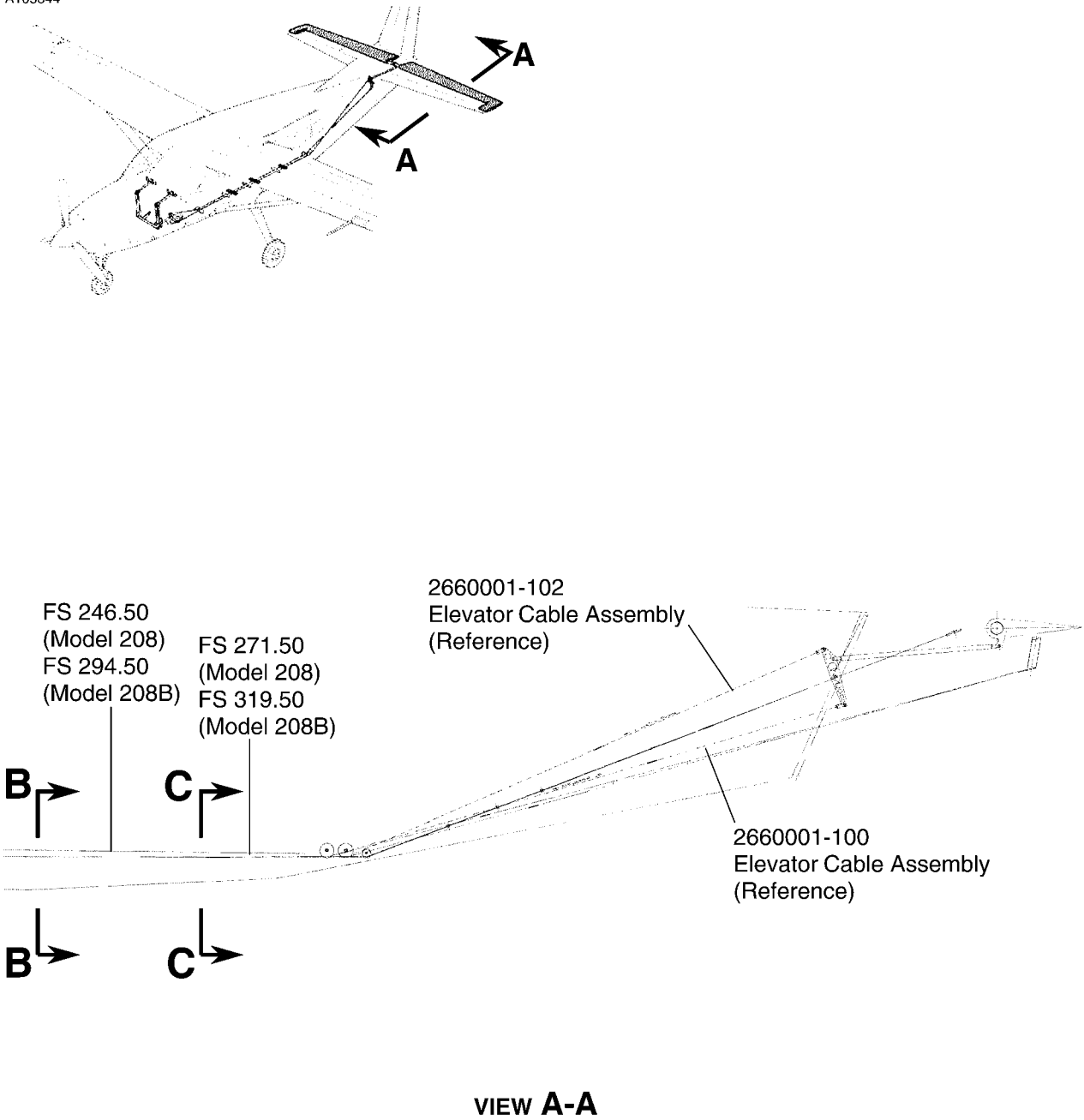
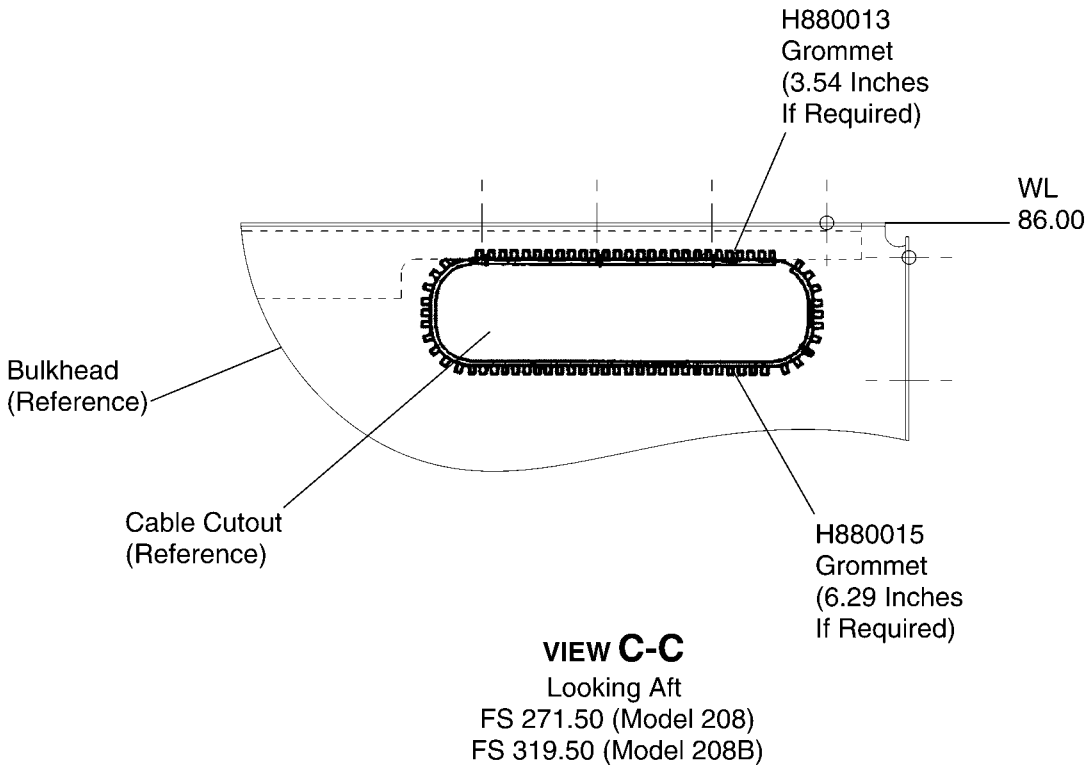
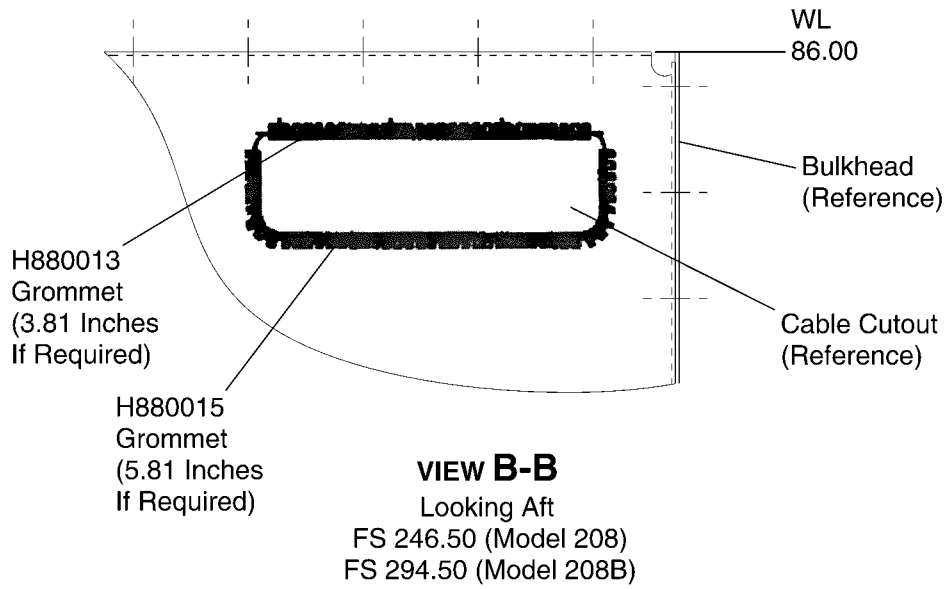


Figure 1. Cable Cutout Grommet Inspection//Replacement (Sheet 1)

26631016
AA2660000

A106015



2611226
2611029

Figure 1. Cable Cutout Grommet Inspection//Replacement (Sheet 2)

MATERIAL INFORMATION

Order the kit/parts below to install this modification.

| NEW P/N | QUAN- TITY | KEY WORD | OLD P/N | INSTRUCTIONS/ DISPOSITION |
|----------------|-----------------------|-----------------|----------------|--------------------------------------|
| H880013 | If Required | Grommet | Same | Discard |
| H880015 | If Required | Grommet | Same | Discard |

* Please contact a Textron Aviation Authorized Service Facility for current cost and availability of parts listed in this service document.

Based on availability and lead times, parts may require advanced scheduling.

TITLE

FLIGHT CONTROLS - INSTALL MISSING CATERPILLAR GROMMETS IN THE BULKHEAD CUTOUTS

TO:

Aircraft Owner

REASON

To install caterpillar grommets to bulkhead cutouts to protect control cables.

COMPLIANCE

RECOMMENDED. This service document should be accomplished at a scheduled maintenance period or inspection.

LABOR HOURS

| WORK PHASE | LABOR-HOURS |
|--------------|--|
| Inspection | 0.5 |
| Modification | 1.0 per bulkhead cutout to install the grommet |

MATERIAL AVAILABILITY

| PART NUMBER | AVAILABILITY | COST |
|-------------|--------------|------|
| H880013 | * | * |
| H880015 | * | * |

* Please contact a Textron Aviation Authorized Service Facility for current cost and availability of parts listed in this service document.

Based on availability and lead times, parts may require advanced scheduling.

WARRANTY

This service document is *recommended*. Eligible airplanes may qualify for parts and labor coverage to the extent noted in the *Labor Hours* and *Material Availability* sections of this document.

Eligibility: Airplanes identified within the serial number effectivity of this service document must have active Airframe warranty coverage on the original issue date of this document and the coverage must be active on the day the work is accomplished.

Parts Coverage: Textron Aviation-owned and Textron Aviation-authorized Service Facilities, operators, or other maintenance facilities may submit a claim for the parts required to accomplish this service document as defined in the *Material Availability* section of this document.

Labor Coverage: Textron Aviation-owned and Textron Aviation-authorized Service Facilities rated to perform maintenance on the specific model of Cessna Aircraft may submit a claim for the labor necessary to accomplish this service document as defined in the *Labor Hours* section of this document.

Credit Application: After this service document has been accomplished, a claim must be submitted to Textron Aviation within 30 days of the service document completion. Claims for compliance of this service document are to be filed as a W4 type claim.

Please submit your claim form online at ww2.txtav.com/Parts or email the completed Textron Aviation Claim Form to warranty@txtav.com. If submitted on-line a Return Authorization will be provided. If a paper claim is submitted your claim will be entered into the system and a Return Authorization will be sent to you.

The Return Authorization must accompany any required return parts (see *Material Availability*), to the point of purchase.

Parts to be returned to Textron Aviation Parts Distribution should be forwarded to:

Textron Aviation Parts Distribution
Warranty Administration
285 South Greenwich Road
Bldg B89, Docks 1-4
Wichita, KS 67206
USA

Expiration: January 11, 2021 (after this date the owner/operator assumes the responsibility for compliance costs)

Textron Aviation reserves the right to void continued airplane warranty coverage for the parts affected by this service document until the service document is accomplished.

NOTE: As a convenience, service documents are now available online to all our customers through a simple, free-of-charge registration process. If you would like to sign up, please visit the Customer Access link at www.txtavsupport.com to register.